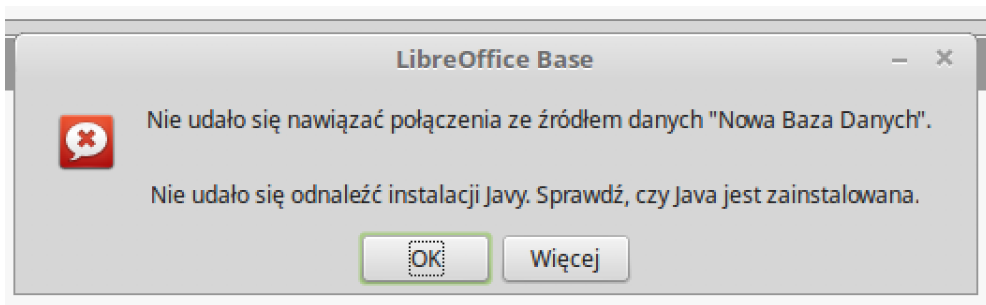
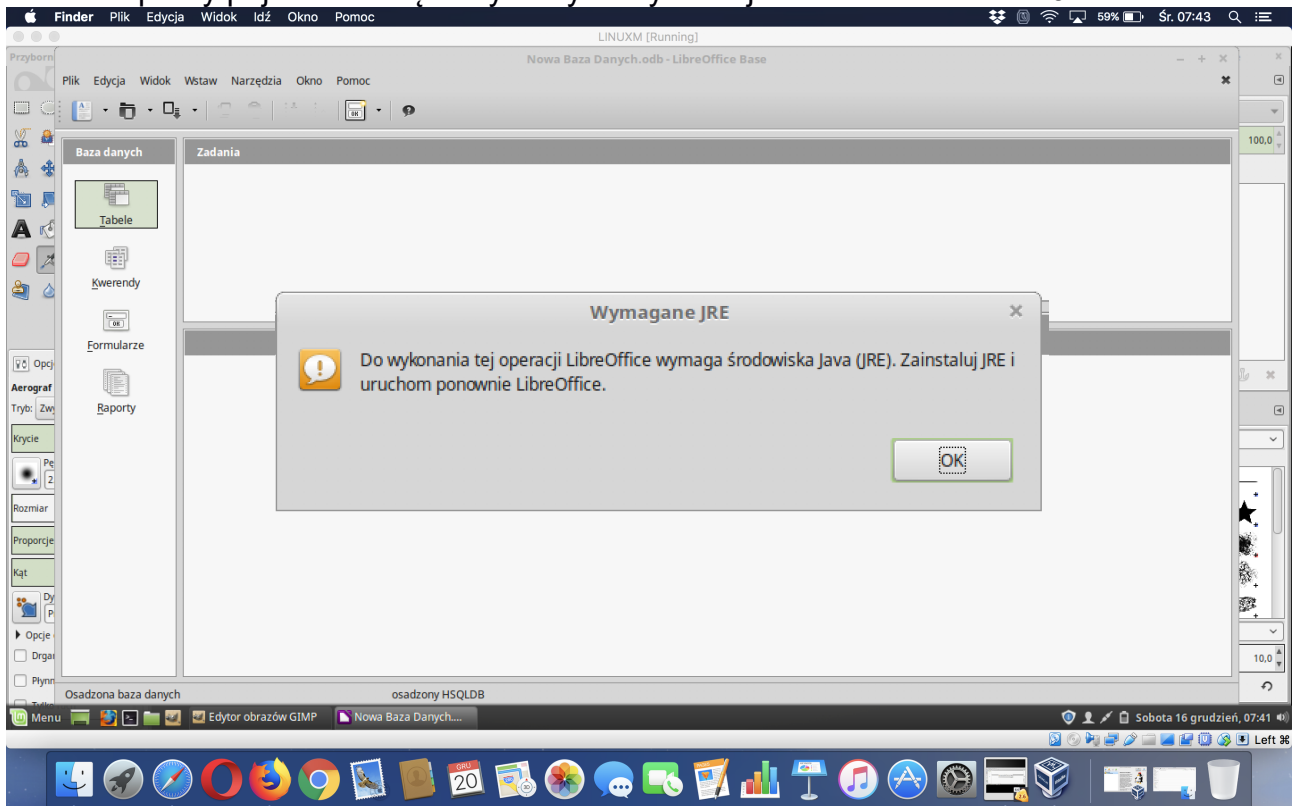


# Uruchomienie programu BASE z pakietu Libre Office w przypadku problemu z JRE (dotyczy każdego OS)

Podczas próby pojawienia się bazy danych wyskakuje komunikat o braku JRE.



Należy pobrać ze strony producenta oprogramowanie JRE i zainstalować.

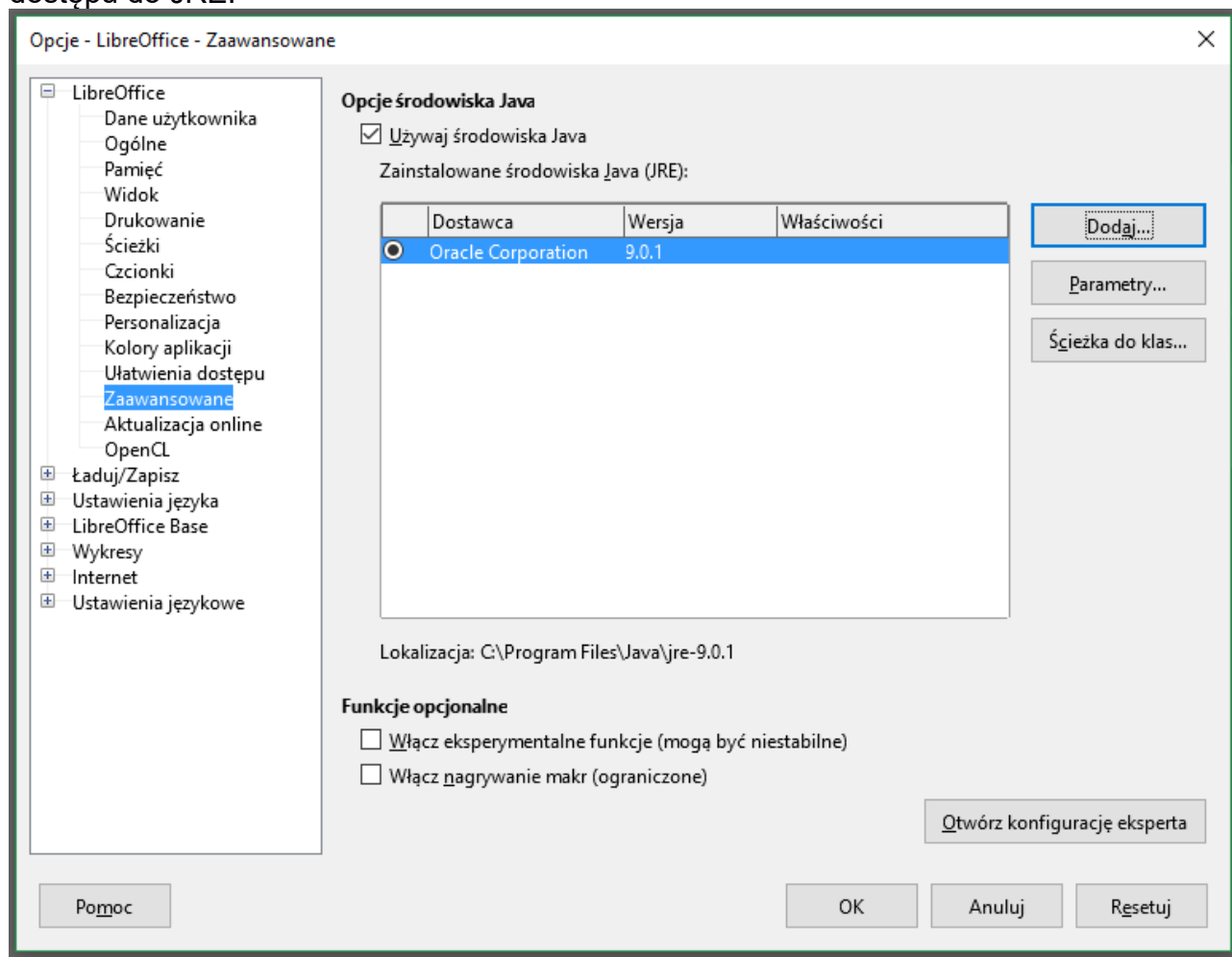
The screenshot shows the Oracle Technology Network website. The Oracle logo is in the top left. A navigation menu is in the top center, and a search bar is to its right. In the top right, there are links for 'Sign In' and a globe icon. Below the header, a breadcrumb trail reads 'Oracle Technology Network / Java / Java SE / Downloads'. A left sidebar contains a list of Java-related categories. The main content area has tabs for 'Overview', 'Downloads', 'Documentation', 'Community', 'Technologies', and 'Training'. The 'Downloads' tab is active, displaying the 'Java SE Runtime Environment 8 Downloads' page. The page text explains that JRE is needed to run Java programs, while JDK is needed to develop them. It provides links for JRE 8u151 and 8u152 checksums. A prominent message states: 'You must accept the Oracle Binary Code License Agreement for Java SE to download this software. Thank you for accepting the Oracle Binary Code License Agreement for Java SE; you may now download this software.' Below this is a table of download links for various operating systems.

Product / File Description	File Size	Download
Linux x86	63.37 MB	<a href="#">jre-8u151-linux-i586.rpm</a>
Linux x86	79.24 MB	<a href="#">jre-8u151-linux-i586.tar.gz</a>
Linux x64	60.39 MB	<a href="#">jre-8u151-linux-x64.rpm</a>
Linux x64	76.32 MB	<a href="#">jre-8u151-linux-x64.tar.gz</a>
macOS	74.14 MB	<a href="#">jre-8u151-macosx-x64.dmg</a>

Po prawidłowym zainstalowaniu otrzymujemy komunikat:

The screenshot shows a dialog box titled 'Install Java 8 Update 151'. It features the Java logo and the text: 'You have Successfully Installed Java 8 Update 151.' Below this, it says: 'You will be prompted when Java updates are available. Always install updates to get the latest performance and security improvements.' There is a link for 'More information about update settings'. At the bottom, it says: 'When you click Close, your browser will open so that you can verify that Java is working.' and a 'Close' button.

Następnie należy wejść w LibreOffice w narzędzia → zaawansowane i dodać ścieżkę dostępu do JRE:



Po zatwierdzeniu ustawień można używać pakietu BASE w LibreOffice.

